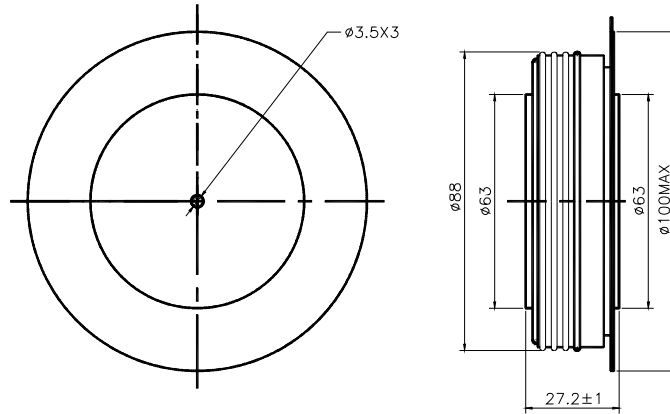


D30-XX00
RECTIFIER DIODE

SYMBOL	CHARACTERISTIC	TEST CONDITIONS	T _j (°C)	VALUE			UNIT
				Min	Type	Max	
I _{F(AV)}	Mean forward current	180° half sine wave 50Hz Double side cooled, T _{hs} =55°C	150			3834	A
I _{F(AV)}	Mean forward current	180° half sine wave 50Hz Double side cooled, T _{hs} =90°C	150			2828	A
V _{RRM}	Repetitive peak reverse voltage	V _{RRM} tp=10ms V _{RSM} = V _{RRM} +100V	150	1100		2000	V
I _{RRM}	Repetitive peak current	at V _{RRM}	150			160	mA
I _{FSM}	Surge forward current	10ms half sine wave	150			49.8	KA
I ² T	I ² T for fusing coordination	V _R =0.6V _{RRM}				12421	A ² s*10 ³
V _{FO}	Threshold voltage		150			0.70	V
r _F	Forward slop resistance					0.09	mΩ
V _{FM}	Peak on-state voltage	I _{TM} =5400A, F=35KN	150			1.19	V
I _{rm}	Reverse recovery current		150			176	A
t _{rr}	Reverse recovery time	I _{TM} =1000A, tp=1000μs, di/dt=-40A/μs, V _R =50V				7.6	μs
Q _{rr}	Recovery charge					668	μC
R _{th(j-h)}	Thermal resistance Junction to heatsink	At 180° sine double side cooled Clamping force 35KN				0.016	°C /W
F _m	Mounting force			30		40	KN
T _{stg}	Stored temperature			-40		160	°C
W _t	Weight				900		g
Outline	ZT60cT70						

Outline



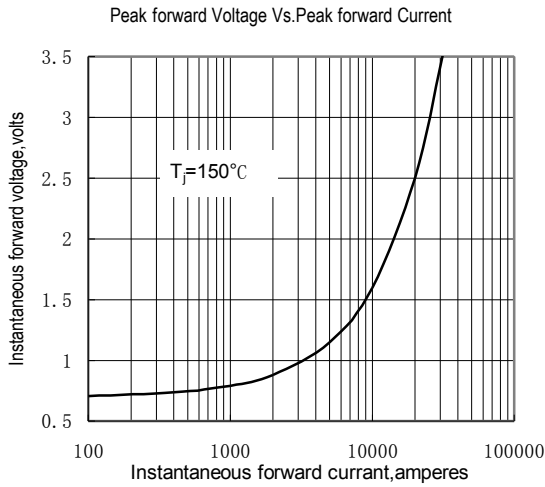


Fig.1

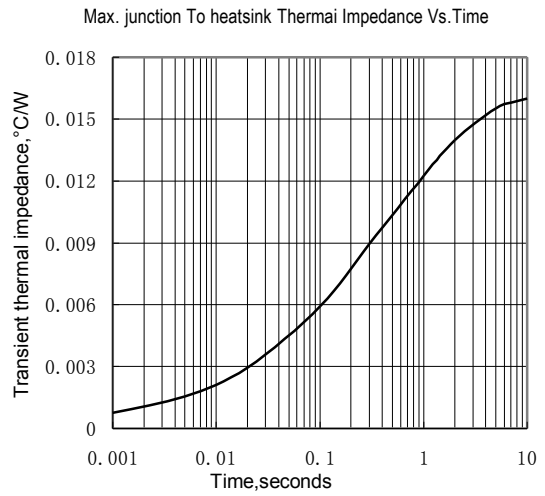


Fig.2

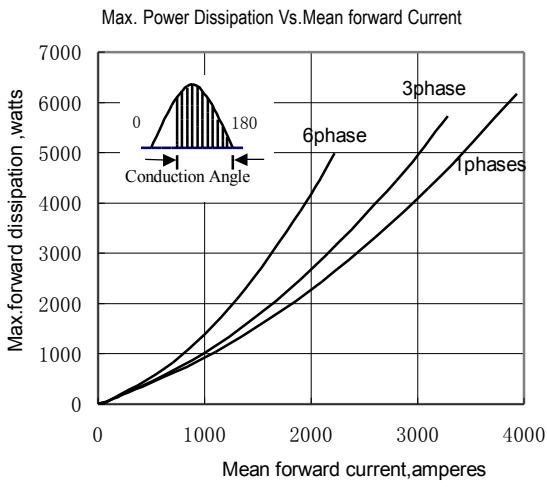


Fig.3

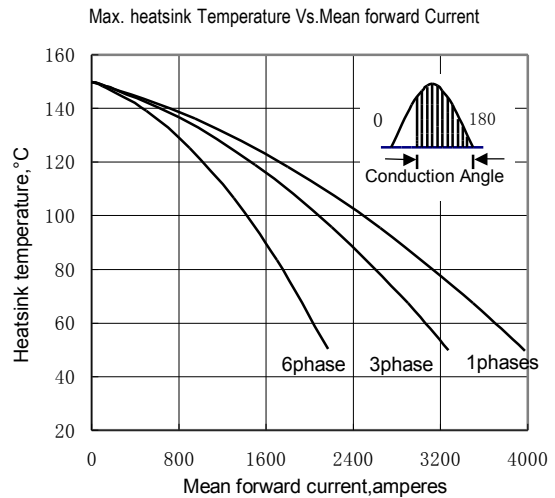


Fig.4

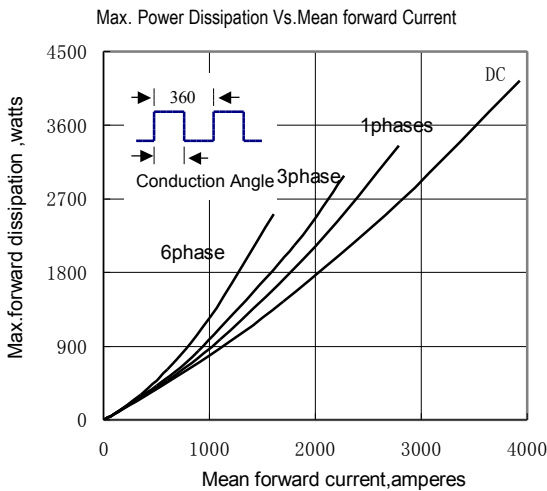


Fig.5

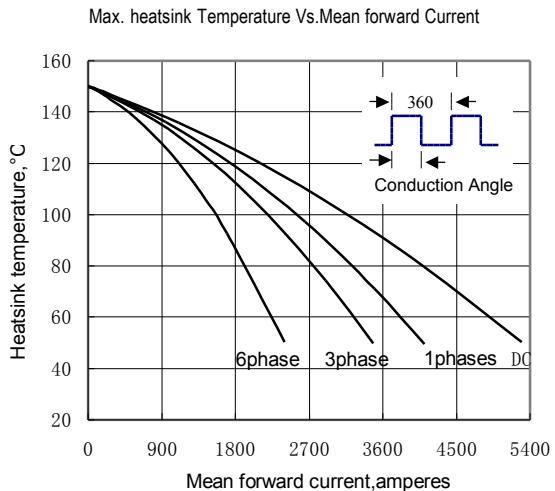


Fig.6