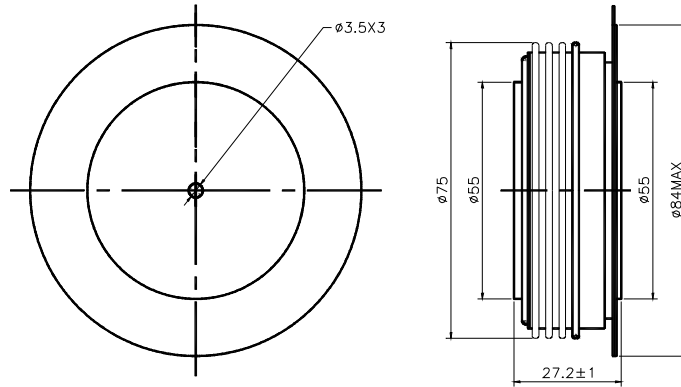


SYMBOL	CHARACTERISTIC	TEST CONDITIONS	T <sub>j</sub> (°C)	VALUE			UNIT
				Min	Type	Max	
I <sub>F(AV)</sub>	Mean forward current	180° half sine wave 50Hz Double side cooled, T <sub>hs</sub> =55°C	150			2745	A
I <sub>F(AV)</sub>	Mean forward current	180° half sine wave 50Hz Double side cooled, T <sub>hs</sub> =90°C	150			1990	A
V <sub>RRM</sub>	Repetitive peak reverse voltage	V <sub>RRM</sub> tp=10ms V <sub>RSM</sub> = V <sub>RRM</sub> +100V	150	2100		3000	V
I <sub>RRM</sub>	Repetitive peak current	at V <sub>RRM</sub>	150			120	mA
I <sub>FSM</sub>	Surge forward current	10ms half sine wave	150			35.7	KA
I <sup>2</sup> T	I <sup>2</sup> T for fusing coordination	V <sub>R</sub> =0.6V <sub>RRM</sub>				6367	A <sup>2</sup> s*10 <sup>3</sup>
V <sub>FO</sub>	Threshold voltage		150			0.92	V
r <sub>F</sub>	Forward slop resistance					0.12	mΩ
V <sub>FM</sub>	Peak on-state voltage	I <sub>TM</sub> =4500A, F=28KN	150			1.46	V
I <sub>rm</sub>	Reverse recovery current		150			150	A
t <sub>rr</sub>	Reverse recovery time	I <sub>TM</sub> =1000A, tp=1000μs, di/dt=-40A/μs, V <sub>R</sub> =50V				6.8	μs
Q <sub>rr</sub>	Recovery charge					522	μC
R <sub>th(j-h)</sub>	Thermal resistance Junction to heatsink	At 180° sine double side cooled Clamping force 28KN	150			0.020	°C /W
F <sub>m</sub>	Mounting force			21		30	KN
T <sub>stg</sub>	Stored temperature			-40		160	°C
W <sub>t</sub>	Weight				650		g
Outline	ZT54cT60						

Outline



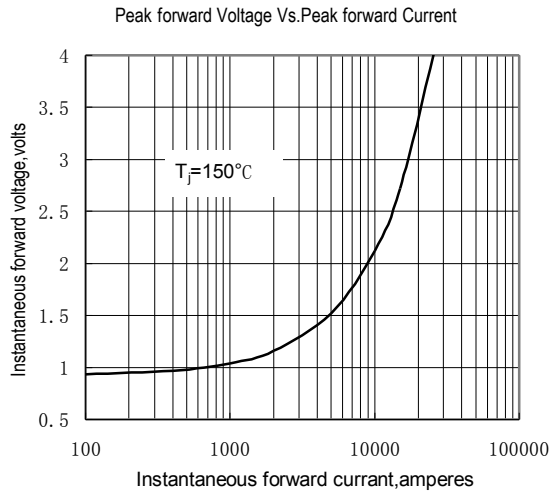


Fig.1

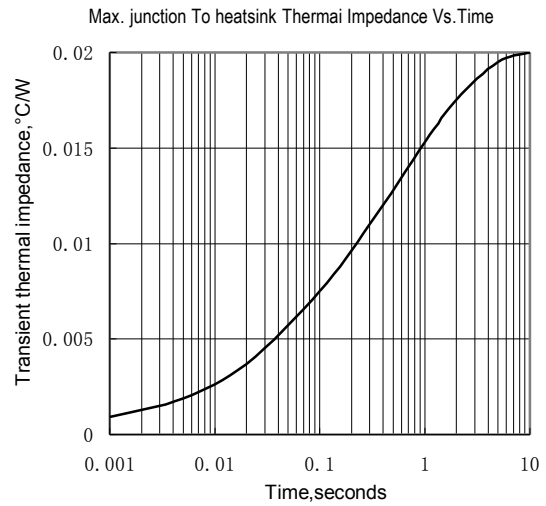


Fig.2

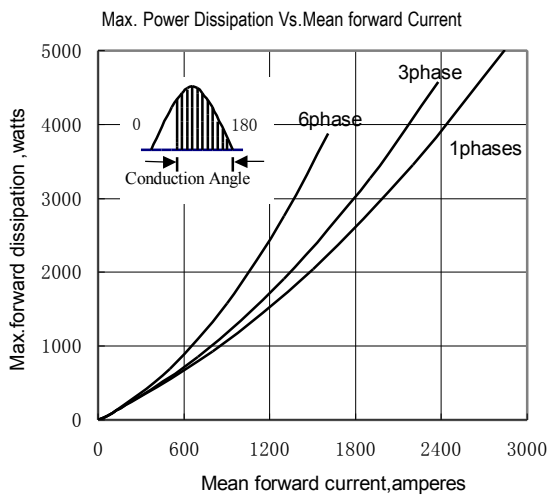


Fig.3

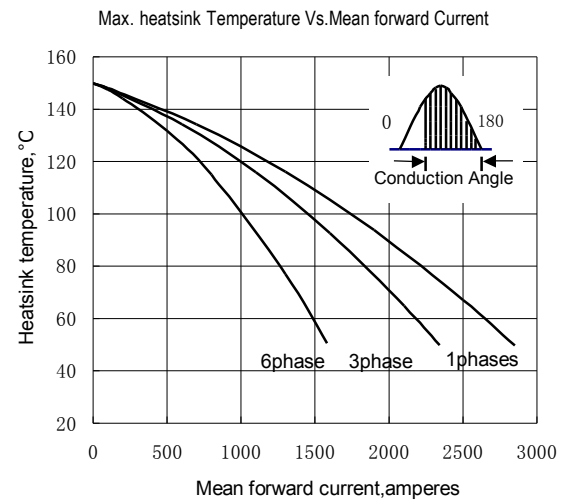


Fig.4

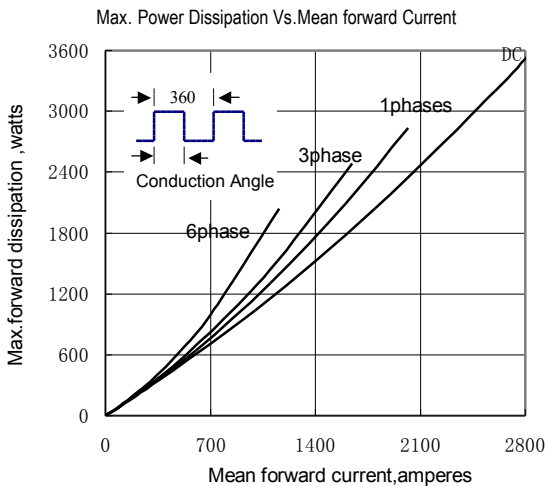


Fig.5

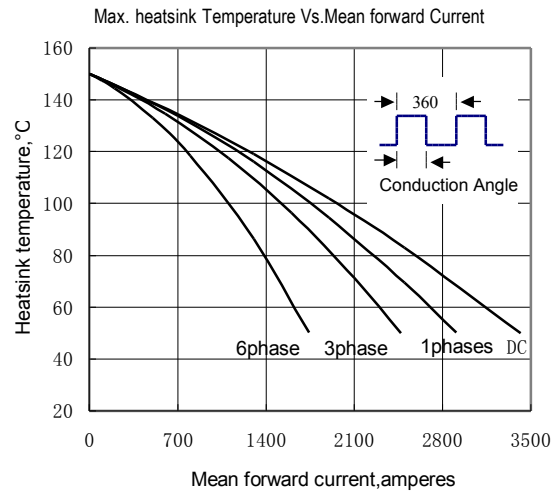


Fig.6