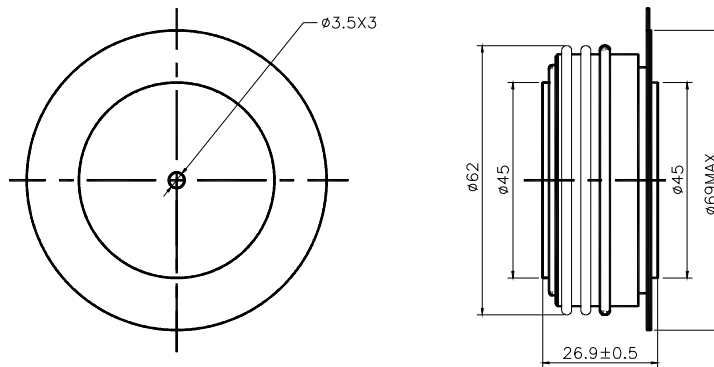


SYMBOL	CHARACTERISTIC	TEST CONDITIONS	T _j (°C)	VALUE			UNIT
				Min	Type	Max	
I _{F(AV)}	Mean forward current	180° half sine wave 50Hz Double side cooled, T _{HS} =55°C	150			2106	A
I _{F(AV)}	Mean forward current	180° half sine wave 50Hz Double side cooled, T _{HS} =90°C	150			1522	A
V _{RRM}	Repetitive peak reverse voltage	V _{RRM} tp=10ms V _{RSM} =V _{RRM} +100V	150	200		1000	V
I _{RRM}	Repetitive peak current	at V _{RRM}	150			60	mA
I _{FSM}	Surge forward current	10ms half sine wave	150			27.4	KA
I ² T	I ² T for fusing coordination	V _R =0.6V _{RRM}				3748	A ² s*10 ³
V _{FO}	Threshold voltage		150			0.82	V
r _F	Forward slop resistance					0.13	mΩ
V _{FM}	Peak on-state voltage	I _{TM} =3800A, F=21KN	150			1.32	V
I _{rm}	Reverse recovery current		150			128	A
t _{rr}	Reverse recovery time	I _{TM} =1000A, tp=1000μs, di/dt=-40A/μs, V _R =50V				4.9	μs
Q _{rr}	Recovery charge					313	μC
R _{th(j-h)}	Thermal resistance Junction to heatsink	At 180° sine double side cooled Clamping force 21KN				0.030	°C /W
F _m	Mounting force			18		25	KN
T _{stg}	Stored temperature			-40		160	°C
W _t	Weight				400		g
Outline	ZT44cT						

Outline



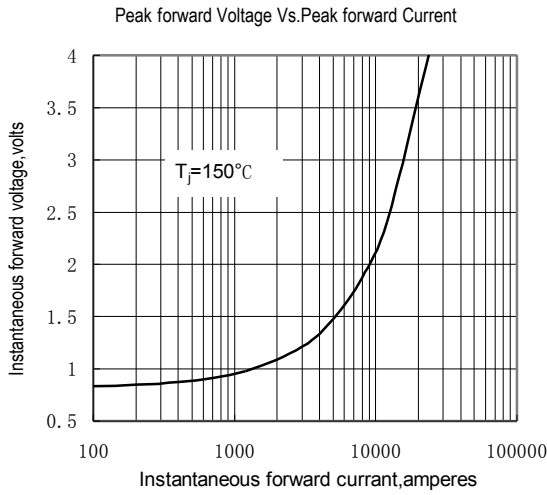


Fig.1

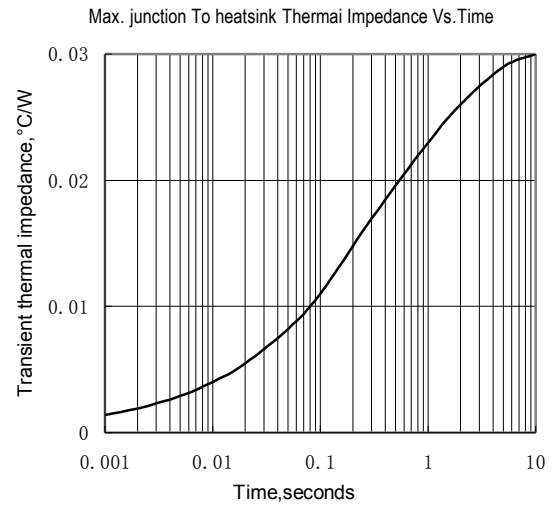


Fig.2

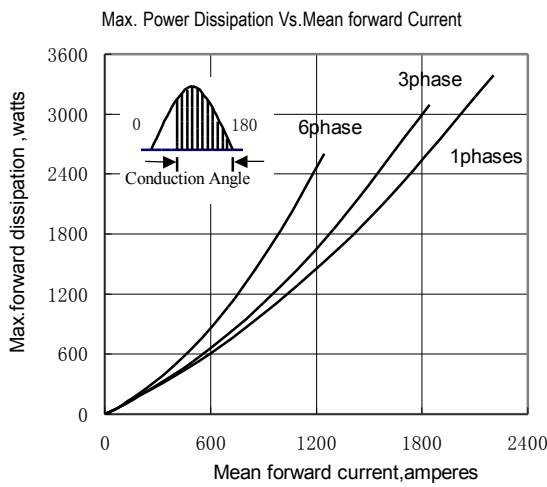


Fig.3

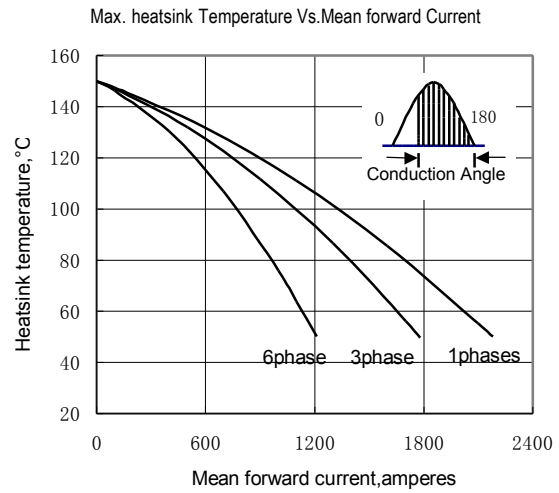


Fig.4

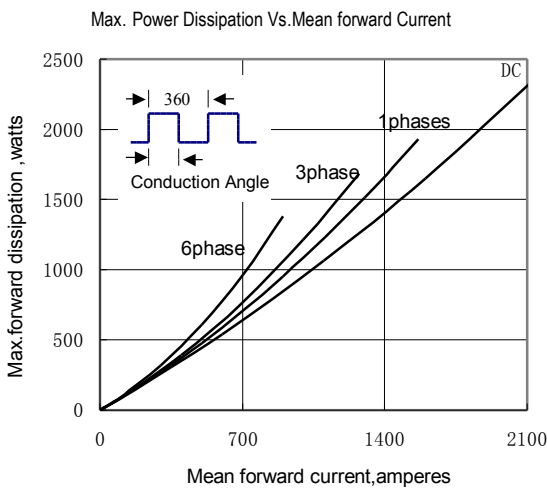


Fig.5

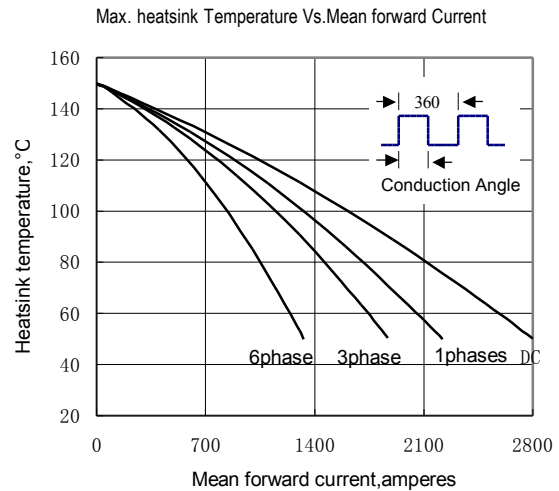


Fig.6