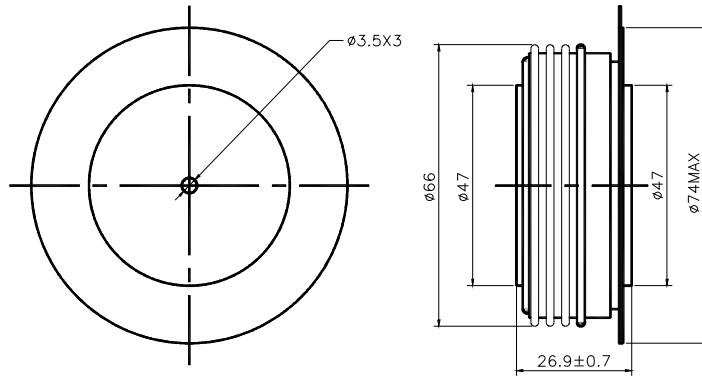


D10-XX00
RECTIFIER DIODE

SYMBOL	CHARACTERISTIC	TEST CONDITIONS	T _j (°C)	VALUE			UNIT	
				Min	Type	Max		
I _{F(AV)}	Mean forward current	180° half sine wave 50Hz Double side cooled, T _{hs} =55°C	150			2167	A	
I _{F(AV)}	Mean forward current	180° half sine wave 50Hz Double side cooled, T _{hs} =90°C	150			1612	A	
V _{RRM}	Repetitive peak reverse voltage	V _{RRM} tp=10ms V _{RSM} = V _{RRM} +100V	150	2100		3000	V	
I _{RRM}	Repetitive peak current	at V _{RRM}	150			80	mA	
I _{FSM}	Surge forward current	10ms half sine wave	150			28.2	KA	
I ² T	I ² T for fusing coordination	V _R =0.6V _{RRM}					3968	A ² s*10 ³
V _{FO}	Threshold voltage		150			0.82	V	
r _F	Forward slop resistance						0.22	mΩ
V _{FM}	Peak on-state voltage	I _{TM} =3800A, F=24KN	150			1.66	V	
I _{rm}	Reverse recovery current		150			130	A	
t _{rr}	Reverse recovery time	I _{TM} =1000A, tp=1000μs, di/dt=-40A/μs, V _R =50V					5.0	μs
Q _{rr}	Recovery charge						325	μC
R _{th(j-h)}	Thermal resistance Junction to heatsink	At 180° sine double side cooled Clamping force 24KN				0.022	°C /W	
F _m	Mounting force			19		26	KN	
T _{stg}	Stored temperature			-40		160	°C	
W _t	Weight				470		g	
Outline	ZT50cT							

Outline



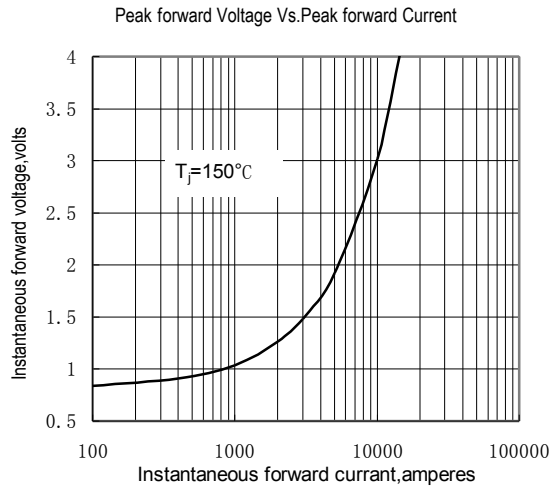


Fig.1

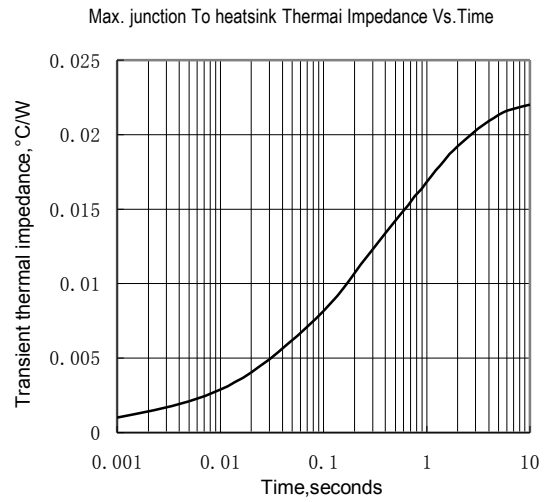


Fig.2

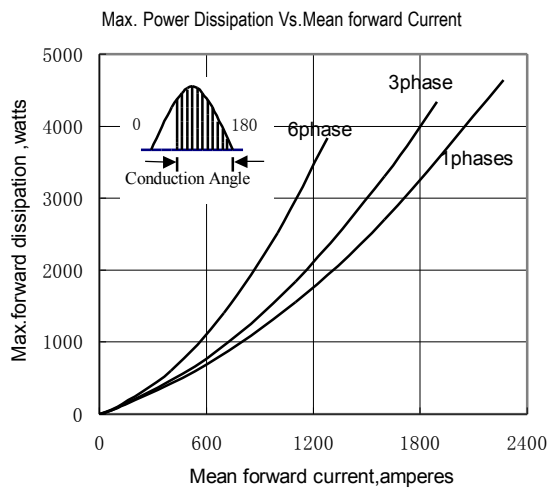


Fig.3

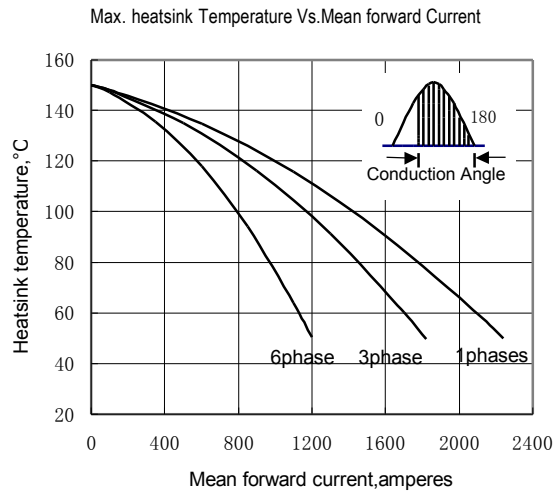


Fig.4

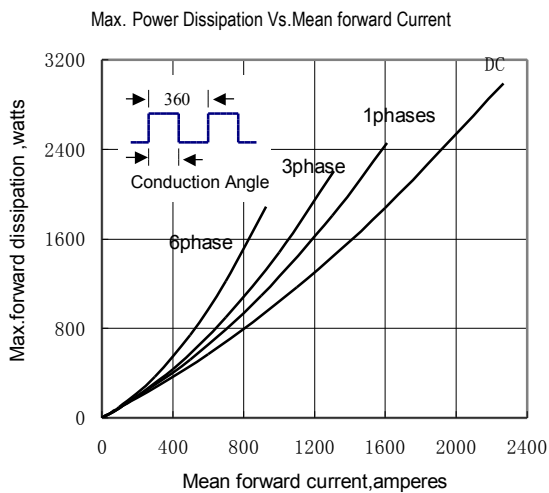


Fig.5

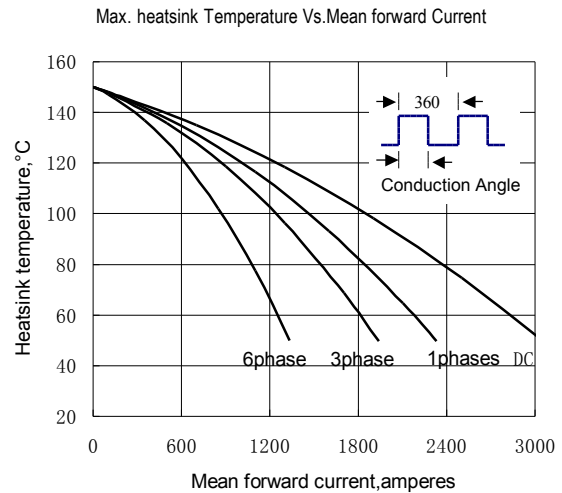


Fig.6

D10-XX00
RECTIFIER DIODE
